



Multi-mode Fiber Laser

YLPM-6000-W

The multi-module continuous fiber laser adopts 976nm high efficiency bidirectional pumping technology, multi-module design, stable operation, less faults and convenient later maintenance, and high EO conversion efficiency. Compact volume, high space utilization rate, high cutting efficiency, fast piercing speed, more delicate cutting surface, strong welding ability.

Advantages

- Adopts mature and stable multi-module design, high product design standards, large design redundancy, more stable operation;
- Meet the needs of various metal materials processing, widely used in laser cutting, laser welding, laser cladding and other fields;
- EO efficiency of the whole machine $\geq 42\%$, high long-term economic benefit, energy saving.


Applications


Widely used in laser cutting, laser welding, laser cladding, laser brazing, laser surface heat treatment, etc., the application of hardware, medical, automotive, shipbuilding, aviation, construction machinery and other fields.


The professional performance laser series of GW is aimed at customers who have the pursuit of product performance indicators, the replacement of imported products or the product functionality requirements. Product design to the first-line brand, with better product performance indicators, perfect functions, design redundancy is greater, to provide customers with more value-added space.

- 976nm high efficiency bidirectional pumping technology, EO efficiency $\geq 42\%$
- SPP ultra-high pulse patent, greatly improve drilling efficiency
- ABR anti-reflection design, suitable for a variety of high reflective materials processing applications
- The output core diameter can be customized to meet the application requirements of multiple scenarios

 EO conversion efficiency $\geq 42\%$

 Easily process high anti materials

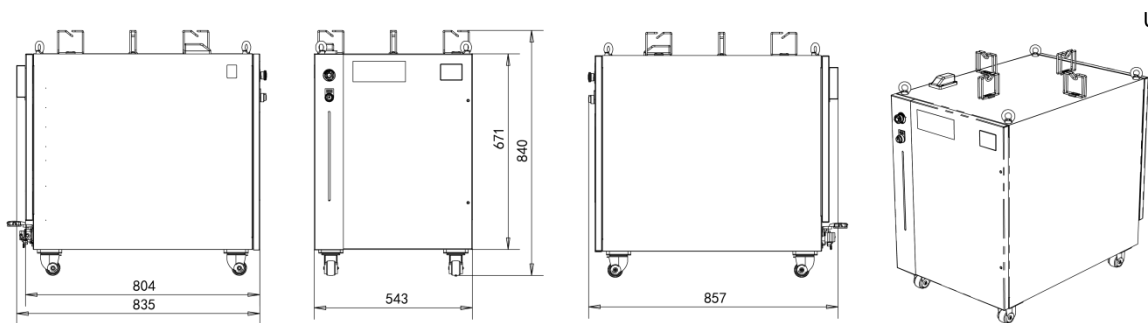
 Power closed loop control

 Custom waveform output

Multi-mode Fiber Laser

YLPM-6000-W

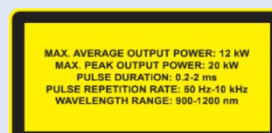
Product specification parameter	YLPM-6000-W
Output Power (watt)	6000
Operating Mode	CW/Pulse/Built-in program
Output Power Range (%)	1-100
Output Laser Wavelength (nm)	1070±10
Beam Quality	BPP≤4
Interface Type	QBH/Q+
Delivery Fiber Core Diameter (conventional configuration, optional)	100um
Cooling Method	Water-cooling
Ambient Temperature Range (°C)	5-45
Input Voltage	380VAC/50Hz
Dimension (mm)	857x 543 x 840 (L×W×H)
Weight (kg)	260



Legal Notice: All product information is believed to be accurate and subject to change without notice.

Legal statement:

GW smart fiber laser products are designed in strict accordance with safety regulations. All production is in accordance with international standards and regulations currently in force in the country. Each GW laser has a warning sign as shown in the figure.



GW(Shanghai) Laser Technology Co.,Ltd. Tel: +86 2139721122 Email: sales@gwlaser.tech

Web: www.gwlaser.tech Addr: Building 5-1, No.398, Shuanglian Road, Xujing Town, Qingpu District, Shanghai